



CogniSense



CogniSense is a web-based application that delivers monitoring, analytics and structured troubleshooting of multi-technology network, subscriber and device performance, as well as automated report creation and distribution.

Modern mobile networks generate vast amounts of subscriber experience data. When this information is further enhanced with geolocation data and analytics, it provides extra value for engineering, customer care and marketing teams within your organization.

In the quest to continually improve operational efficiency, engineers need a way to rapidly resolve network issues impacting the business. But finding the root cause often requires the use of advanced geo-analytics and sophisticated visualization tools. It is important for users to be able to quickly access relevant information generated by these tools.

CogniSense was built to deliver on these requirements through geo analytics dashboards that provide a high level overview of network, subscriber and device performance, and customized reports to meet specific needs. You can even drill down into charts and geographic information systems (GIS) to troubleshoot or further investigate the results of business driven analytics.



Aircom is a network engineering tools market leader

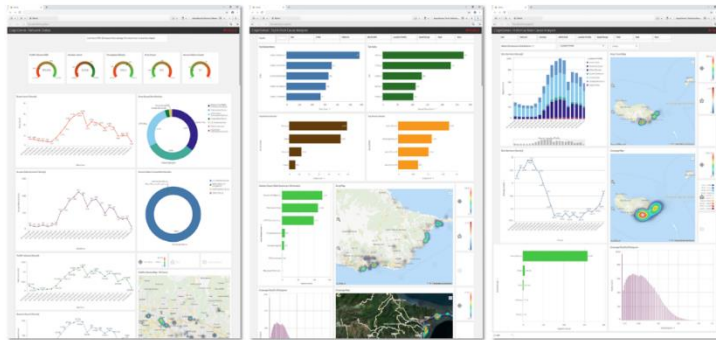


Advanced Geo-Analytics

Best-in-class geolocation analytics and virtual drive test capabilities including binned maps, VDT with complete L3 event analysis and KPI color-coded sectors all on a GIS.

Scalable Data Handling

Built on a globally proven, highly scalable, modern “Big Data” BI platform with a powerful HTML 5.0 web-based user interface to handle the vast amounts of data generated by modern networks.



Actionable Insights

Focused on highlighting not only the issues but recommending resolutions too, through a rich set of graphical components for sophisticated visualizations.

Self Service

Users can create and customize their own dashboards, analyses and charts. Our reporting module enables the easy creation, scheduling, and distribution of reports.

Beyond Network Improvements

Improve data monetization and subscriber profiling with use cases such as roaming analytics and profile segmentation analytics.

CogniSense delivers network improvement, monetization and subscriber profiling data insights through advanced, web-based geo-analytics.

Use cases are grouped into seven Apps covering key business areas:



Engineering Analytics

Monitoring, investigation & troubleshooting of network usage & performance.



Subscriber Analytics

Analysis, investigation & troubleshooting of subscriber quality of experience.



VIP Analytics

KPI monitoring & historical performance analysis of individual VIPs or VIP Groups.



Automatic Problem Detection

Automatic identification & severity assignment of geographical problem area polygons.



Business Analytics

Marketing & sales analytics covering roaming & subscriber profile segmentation.



Configuration Analytics

Monitoring and auditing of network parameter configuration settings.



PM KPI Analytics

Monitoring and investigation of network performance based on PM KPI counters.



CogniSense is part of aircom's Mentor Suite, a comprehensive portfolio of products delivering advanced subscriber geolocation analytics and network optimization by leveraging network measurements and geolocation algorithms.

The products within the Mentor Suite are each tailored to meet the needs of specific groups of users. They are multi-technology, covering 2G, 3G, 4G and 5G, and support all the major network equipment vendors. Our best-in-class geolocation algorithms employ innovative machine learning based positioning techniques. Automation and closed-loop capabilities deliver improved operational efficiencies and the Mentor Suite is fully GDPR compliant.



CogniSense

Multi-technology network monitoring, analytics, structured troubleshooting and reporting.



Mentor

Multi-technology user driven troubleshooting and automated cluster wide optimization.



Forte

Automated GSM frequency planning, neighbor list optimization and spectrum refarming.



Mentor Server

Single common backend for data collection, system monitoring, administration and APIs.

About Aircom

Aircom is a leading provider of RAN analytics, design, and optimization solutions to communication service providers worldwide.

Aircom is a brand that you have known and loved for many years, now backed by the financial strength of TEOCO.

For over 25 years, aircom has enabled mobile operators to automate how they plan, configure, and optimize their networks. This is even more critical when dealing with complex services like fixed wireless access (FWA), 5G standalone, private networks, and IoT, where everything needs to work in harmony to deliver a supreme customer experience. Through advanced analytics, our products provide actionable and measurable insights into network and customer behavior.

Cutting-edge products and services.

Market-leading solutions for addressing today's complex RAN environments.

Innovation is in our DNA.

We have the latest AI/ML-powered algorithms, automation, and new services to revolutionize your RAN.

Trusted by the world's leading service providers.

With 125+ customers in 100+ countries, we have the knowledge and experience you're looking for.

With decades of experience and a customer list that spans the globe, aircom helps its customers improve service quality, resolve network challenges, automate processes, and establish a competitive edge.

Trusted globally

2000+

Users logins into aircom tools daily

125+

CSPs run their networks using aircom tools

100+

Countries with active aircom tools & services